



Rainscreen Baffles and Flashings

use

Baffles and flashings to arrest, channel and discharge rain penetration in rain screen construction.

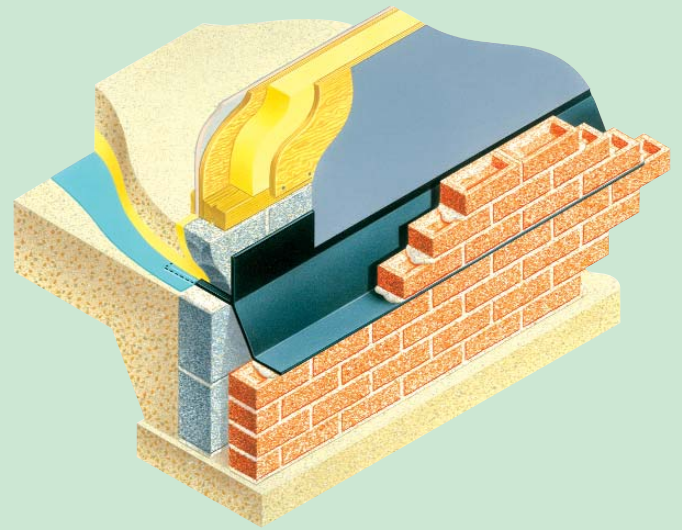
introduction

Open rain screens and pressure-equalised rain screens place dependence on baffles and flashings arresting and deflecting the kinetic force of driving rain. Whilst the screen minimises the building wetting forces, a means to channel and control water that penetrates and gravitates behind the screen face is an accompanying necessity.

Baffles and flashings are specifically profiled to suit individual applications. It is usual for profiles to be angled to promote tolerance of imbalanced air movement within the vertical compartments. We will be delighted to advise you on your project.

data

- Bespoke product details established following project appraisal.
- Black polypropylene and stainless steel material options.
- Accompanying stopends and drop discharge units.



Type TFC Timber Frame Cavity Tray

use

Provides dpc in both skins. Functions as methane and radon (contaminated land) cavity barrier and cavity tray. Interfaces with oversite membrane. Vertically laps with timber frame membrane.

introduction

The Type TFC is manufactured in solid polyethylene dpc, and is ready-shaped for immediate building in. Supplied in long lengths, the TFC section is bedded on mortar and in one placement provides the dpc presence required in both the cavity wall skins. The body of the TFC spans the cavity and guards against contaminated land gases such as radon or methane rising and entering the building envelope. The Type TFC also extends both inwardly and vertically. The inwardly projecting profile interfaces with the oversite membrane to maintain gas and damp protection integrity. The upwardly rising section laps and seals with the timber frame membrane.

data

- Acts as dpc, gas barrier and cavity tray.
- Interfaces with membranes.
- Arrests and permits weep discharge of penetrating water.
- Preformed angles, steps and opening profiles.
- Joined using gas-seal link-bond strips.

