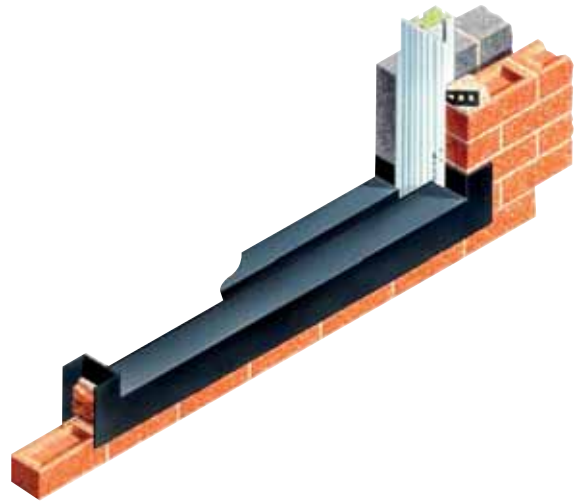


Type LTT

Level Threshold Tray (Threshold Isolation Tray)

- Isolates damp masonry
- Easy interfacing of horizontal and vertical arrangements
- Increases flooring and insulation options
- Standardised protection detail ensures integrity



USE

To protect level thresholds against damp and ensure the adjacent vertical closing and oversite membrane maintain protective integrity at the point of convergence.

SOLUTION

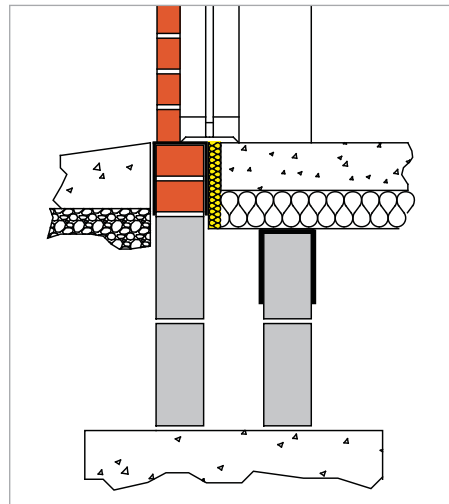
The Type LTT Level Threshold Tray encapsulates the opening masonry exposed to damp penetration or subject to damp infusion. In so doing the transmittance of damp from the exterior skin inwardly or from the inner skin upwardly is prevented and the flooring arrangement can safely integrate.

Manufactured from solid DPC polypropylene, the Type LTT is available in a range of sizes to suit the masonry dimensions of all standard openings. A bespoke service operates for non-standard sizes.

When bedded on the exterior skin, the Type LTT acts a threshold DPC and extends downwardly over both faces of the masonry. At either end of the tray the protection rises, and wraps around the reveal faces including into the cavity. The positioning is identical on the inner skin, although the level of placement is commonly lower.

The Type LTT permits flooring, insulation and DPCs / membranes to continue over an inner skin and converge with an exterior skin that itself is isolated from dampness at the point of convergence.

The oversite membrane is able to terminate against the downward projecting face of the Type LTT whilst the vertical closers to each side of the opening positively interface as shown.



(Notching the closer face permits it to continue downwardly below the Type LTT level, so it terminates below opening level in the usual manner)

Whether the Type LTT is incorporated in the outside skin only or in both skins is determined by the specific construction and flooring arrangement and the damp isolation sought to ensure appropriate integration of all horizontal and vertical elements.

PRODUCT NAME - GROUP

Type LTT

CAVITY WIDTHS ACCOMMODATED

All – width does not affect functionality

DIMENSIONS

Available to suit all opening dimensions with 105mm thickness masonry skin
Other skin thicknesses available

BESPOKE OPTIONS

Yes

TRADITIONAL CONSTRUCTION COMPATIBLE

Yes

TIMBER FRAME CONSTRUCTION COMPATIBLE

Yes

NEW WORK APPLICATIONS

Yes

RETROFIT APPLICATIONS

Yes

MASONRY SKIN STYLES

Split/variable style compatibility limited

UNDULATING MASONRY FACES

Depends on extent of deviation

CONGRUENT WITH OTHER WALL ELEMENTS

Designed for Cavicloser accompaniment

ARRESTED WATER EVACUATION

N/A - no horizontal arrestment

THERMAL TRANSMISSION OF MATERIAL

Negligible - 0.15

MATERIAL

Polypropylene DPC

COLOUR

Black

EXTRUDES / COMPRESSES UNDER LOAD

No

PACK SIZE / WEIGHT

Varies pending design

CFC

CFC Free

ODP

Zero

REGULATION COMPLIANCE

Yes See Designers' Comments

MAY BE USED IF CAVITY INSULATION PRESENT?

Yes with compliant insulation types

CAD DOWNLOADS

Yes

DESIGN CONSIDERATIONS

Insulated sleeve may be introduced between adjacent Type LTTs – see range under Acoustic / Fire Sleeves.



DESIGNERS' COMMENTS

A new British Standard was released in December 2009. BS 8102 provides the Code of Practice for the protection of below ground structures against water from the ground. Section 6.2 states waterproofing protection falls into three classifications: 1. Barrier protection. 2. Structurally integral protection. 3. Drained protection.

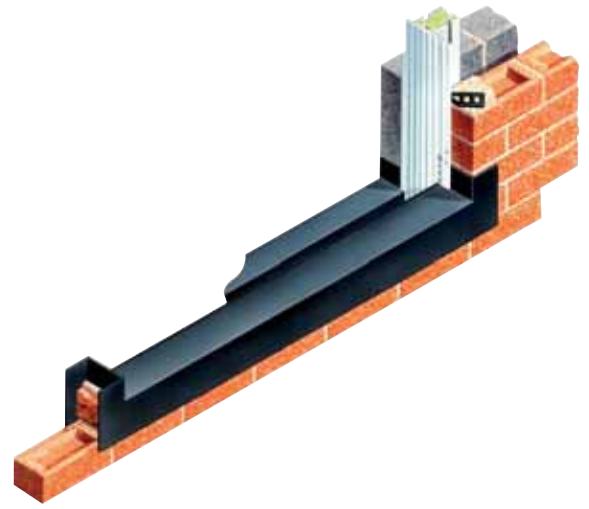
The Type LTT Level Threshold Tray whilst technically a cavity wall DPC, performs twixt levels below and above ground. In so doing it embraces the qualities of 1 + 2 + 3, promoting combined protection as highlighted in BS 8102, 6.2.2. Cavity masonry is able to drain conventionally yet be isolated against damp transference whilst permitting interfacing with the adjacent structure.

Where radon or methane gas is present, a different style of LTT is available that additionally closes the cavity and links with adjacent cavity barriers.

Type LTT (continued)

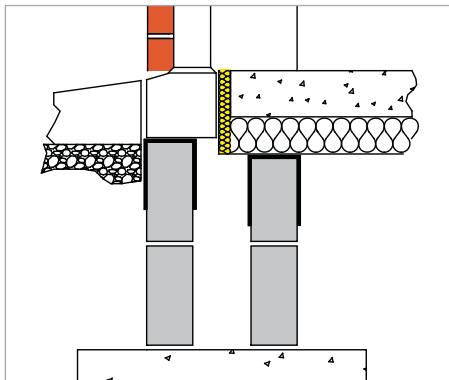
Level Threshold Tray (Threshold Isolation Tray)

- Isolates damp masonry
- Easy interfacing of horizontal and vertical arrangements
- Increases flooring and insulation options
- Standardised protection detail ensures integrity



DAMP-PROOFING

On the external face the downward projecting section can be left in place and will be hidden by any close-finishing ramp/entry path. The reveal wraps may be trimmed to visually suit. Alternatively the section may be removed along a separation indentation, leaving just a small protective bedding lip (as highlighted in BS 5628).



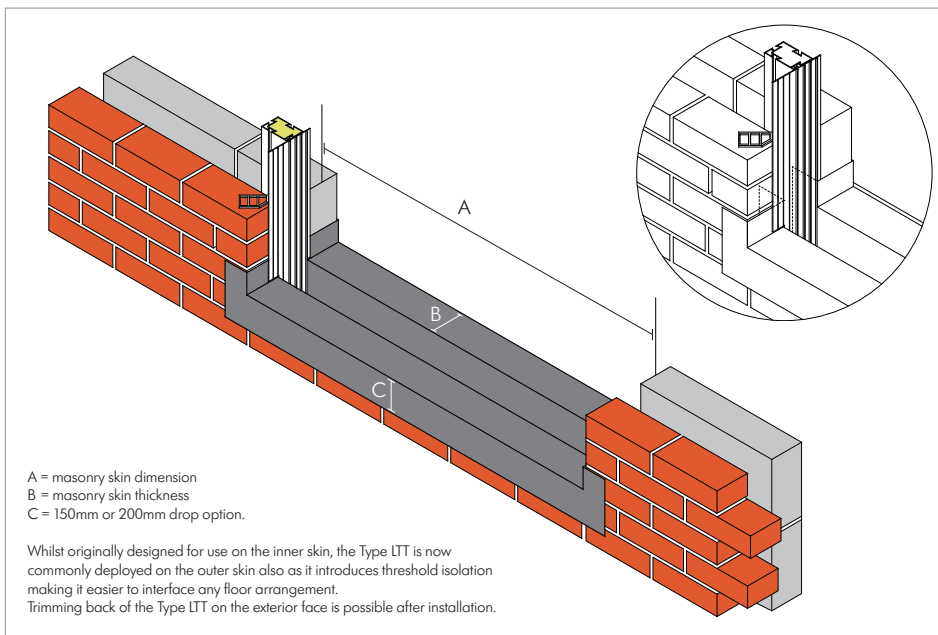
Type LTT Level Threshold Tray dimensions usually remain constant except the dimension to suit the actual opening. In some applications the specifier may elect to increase the dimensions of the downward projections to suit certain flooring details.

HOW TO ORDER

Advise masonry to masonry opening dimension + skin thickness. State whether downward projections should be increased in size. Bespoke: provide all measurements.

SPECIFICATION WORDING

Type LTT Level Threshold Tray to all inner / outer skins of all thresholds by Cavity Trays of Yeovil Somerset BA22 8HU (01935 474769). Request liability/conformity document upon completion.



DESIGNERS' COMMENTS

Where Type LTT Level Threshold Trays are incorporated there is the opportunity to insert an acoustic stop and thermal barrier in the cavity. This can maximise thermal integrity. The requirements of NHBC sill DPC provision (6.1) can be satisfied and the perimeter insulation requirement enhanced rather than diminished across the opening.

PRODUCT NAME - GROUP

Type LTT

CAVITY WIDTHS ACCOMMODATED

All – width does not affect functionality

DIMENSIONS

Available to suit all opening dimensions with 105mm thickness masonry skin
Other skin thicknesses available

BESPOKE OPTIONS

Yes

TRADITIONAL CONSTRUCTION COMPATIBLE

Yes

TIMBER FRAME CONSTRUCTION COMPATIBLE

Yes

NEW WORK APPLICATIONS

Yes

RETROFIT APPLICATIONS

Yes

MASONRY SKIN STYLES

Split/variable style compatibility limited

UNDULATING MASONRY FACES

Depends on extent of deviation

CONGRUENT WITH OTHER WALL ELEMENTS

Designed for Cavicloser accompaniment

ARRESTED WATER EVACUATION

N/A - no horizontal arrestment

THERMAL TRANSMISSION OF MATERIAL

Negligible - 0.15

MATERIAL

Polypropylene DPC

COLOUR

Black

EXTRUDES / COMPRESSES UNDER LOAD

No

PACK SIZE / WEIGHT

Varies pending design

CFC

CFC Free

ODP

Zero

REGULATION COMPLIANCE

Yes See Designers' Comments

MAY BE USED IF CAVITY INSULATION PRESENT?

Yes with compliant insulation types

CAD DOWNLOADS

Yes

DESIGN CONSIDERATIONS

Insulated sleeve may be introduced between adjacent Type LTT's – see range under Acoustic / Fire Sleeves.

