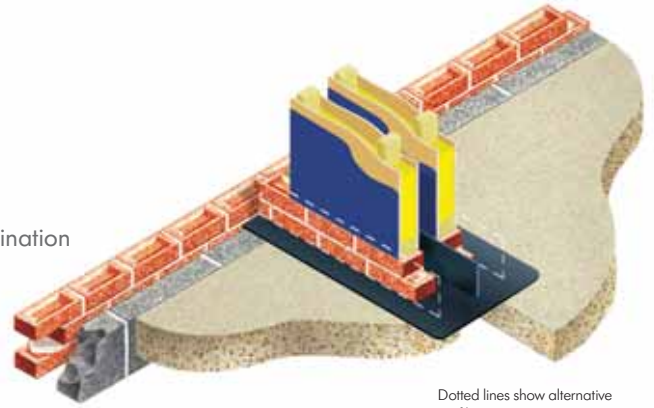


Type PWRB

Party Wall Rising Barrier

- Provides barrier in party wall against adjacent property water contamination
- Acts as DPC at base of wall
- Acts as radon & methane barrier within party wall
- Provides NHBC preventative provision between dwellings
- Permits interfacing with perimeter wall gas barriers



Dotted lines show alternative profile arrangement option

USE

Robust Details and the NHBC provide guidance on how to prevent internal flooding in one dwelling affecting an adjoining dwelling via the separating wall. The Type PWRB provides an alternative approach that is more effective and easier to incorporate.

SOLUTION

Forming a channel in the concrete to coincide with the cavity in the separating wall can be labour intensive and the resultant detail offers limited capacity to accommodate water-wash. The channel also needs to discharge water off its ends, and that entails reaching the cavity of the adjacent exterior walls - normally at right angles. If (gas) cavity barriers exist in the external walls because the property is constructed on contaminated land, they are in the way and discharge cannot take place.

The Type PWRB Party Wall Rising Barrier acts as a DPC and extends under both skins of the separating/party wall. The upstand of the Type PWRB acts as a dam against water flooding in one dwelling from contaminating the adjoining dwelling and its upstand is capable of controlling a far greater volume of water than a channel. Because functionality is achieved by rising in the cavity rather than descending (as with a concrete channel) it can interface with the levels at which contaminated land cavity barriers are commonly

installed in the external walls. Water can safely discharge and gas tight integrity be maintained.

The Type PWRB is supplied in long lengths and bespoke sizes are available in addition to the standard dimensions. Insulation bonded to one face is an additional option.

ADVANTAGE

The Type PWRB Party Wall Rising Barrier can be supplied with two upstands rather than one, in dimensions to suit all cavity party/separating walls where water arrestment at the exterior face is desired. Moving the protection plane away from the centre of the wall to the faces departs from the RB an NHBC approach but has the advantage of reducing potential water damage in the event of an accident.

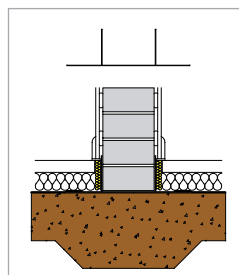
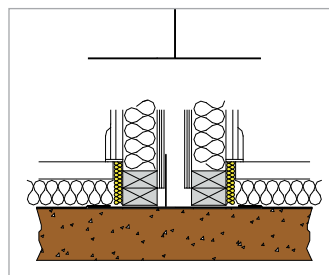
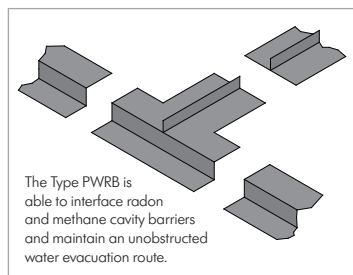
HOW TO ORDER

State number of lengths allowing for 150mm laps.

SPECIFICATION WORDING

Type PWRB Party Wall Rising Barrier by Cavity Trays of Yeovil Somerset BA22 8HU (01935 474769).

Bed and incorporate within separating walls between dwellings. Measured run in metres () Request liability/conformity document upon completion.



DESIGNERS' COMMENTS

The junction of a separating wall with an external cavity wall will usually contain an additional obstacle - a vertical acoustic / fire cavity stop to comply with legislation. It is important its presence does not obstruct the intended discharge route servicing the separating wall. Cavity Trays Ltd offers two styles of vertical acoustic / fire stop that permit compatible interfacing and maintain the water exit path. See Section dealing with Acoustic and Fire Stops and Barriers.

PRODUCT NAME - GROUP

Type PWRB

CAVITY WIDTHS ACCOMMODATED

All - functionality unaffected

DIMENSIONS

2400 x 500 x 150mm rise

BESPOKE OPTIONS

Yes

TRADITIONAL CONSTRUCTION COMPATIBLE

Yes

TIMBER FRAME CONSTRUCTION COMPATIBLE

Yes

NEW WORK APPLICATIONS

Yes

RETROFIT APPLICATIONS

No

CAVITY TIMBER SEPARATING WALL

Compatible

CAVITY MASONRY SEPARATING WALL

Compatible

CONGRUENT WITH OTHER WALL ELEMENTS

No identified exceptions

ARRESTED WATER EVACUATION

Off ends to exterior wall cavity/drainage

THERMAL TRANSMISSION OF MATERIAL

Negligible

MATERIAL

Polypropylene DPC

COLOUR

Black

EXTRUDES / COMPRESSES UNDER LOAD

No

PACK SIZE / WEIGHT

Available individually

CFC

CFC Free

ODP

Zero

REGULATION COMPLIANCE

Yes can be used to satisfy arrestment

MAY BE USED IF CAVITY INSULATION PRESENT?

Functionality not affected

CAD DOWNLOADS

Yes

DESIGN CONSIDERATIONS

Consider presence of vertical fire and acoustic stops at external wall junctions - see Designers' Comments.

