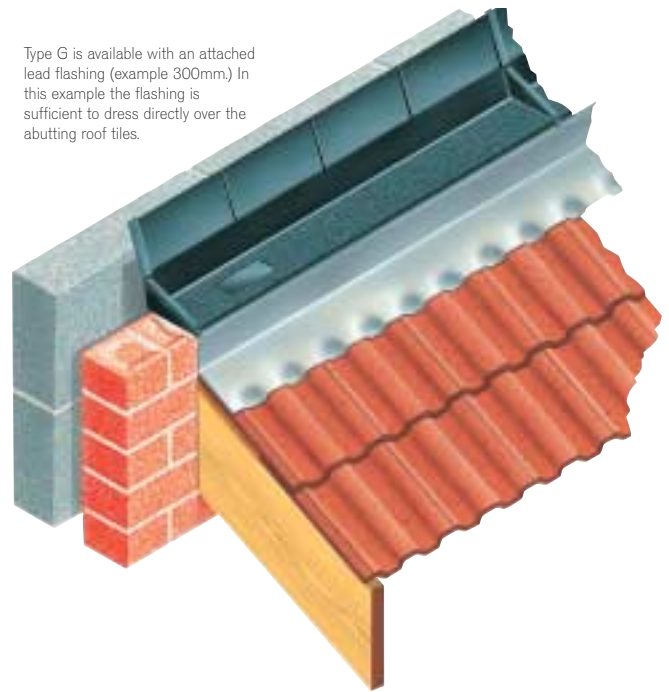


Type G Cavitytray

general-purpose cavitytray for changes of level and building off the solid or ringbeam

Type G is available with an attached lead flashing (example 300mm.) In this example the flashing is sufficient to dress directly over the abutting roof tiles.



- Easy and fast building-in with brickwork sized units
- Adjoining lengths interlock
- Adjustable upstand ensures cavity width compatibility
- Traditional or timber-frame construction
- Unobstructed cavity compartment area
- Establishes consistent build quality detail

DAMP-PROOFING

designers' comments

The Type G cavitytray emerging panoplied lip provides protection to the bedding course - a feature which cannot be achieved with conventional felts and polymers. Trays satisfy the requirements of BS5628, BS8215 and NHBC requirements.

Each Type G cavitytray is a closed-circuit unit, with stand-alone collection and discharge behaviour. Weep/vents permit cavity water evacuation and cavity ventilation. Because the cavity upstand is hinged and of a tensioned nature, it accommodates the as-built cavity status rather than the as-intended, whilst maintaining a clear cavity compartment area.

The Type G may also be used within diaphragm walls. The widened cavity and structurally connecting brickwork cross-ribs of the diaphragm wall accept the cavitytray which limits the possible water "pooling" to an area just within the cavity void. DPCs in a diaphragm wall must not travel across to the inside skin. Tray upstands are built through connecting cross-ribs.

problem

Formation of a reliable DPC system for general-purpose applications including changes of level, diaphragm walls, porch and garage roof intersections, building off the solid, junctions with bay windows etc.

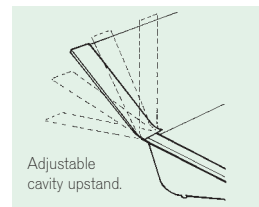
introduction

The Type G cavitytray is designed for general-purpose horizontal applications. It is supplied in preformed lengths and preformed angles, all of which have end upstands. Long runs of tray are easily created as adjoining section ends unite and secure together within the perp joint. Thus a positive union is established. The Type G cavitytray is available in three styles. All the Type G versions feature an adjustable upstand (shown above) within the cavity, which accommodates

cavity widths from 50mm up to 140mm.

solution

The Type G cavitytray is manufactured in standard 900mm lengths. Infill or special lengths to suit specific runs are also available. Thus the use of the Type G cavitytray can eliminate waste and aid efficient and cost-effective stock control.



Each tray has integral stopends and is therefore a self-contained unit. Linking adjoining trays creates long runs. An integral caisson lock-link on the stopend moulding permits this to be done instantly and positively.

Gluing and sticking by site operatives is eliminated. Standards are thus not dependent on the man on site who may not be trained or able to maintain 100% consistency or accuracy.

Preformed trays are available to accommodate angles or piers where they are encountered. Thus the protective tray detail is maintained throughout the installation.

Type G cavitytrays may be supplied with a lead flashing already attached. This offers several further advantages.

It eliminates the need to deal with the flashing as a separate site operation. It also establishes beyond doubt that the union between tray and flashing is correct and positive. The mason is also saved the task of having to return to site at a later date to point-in the union.

The cavity upstand that rises from each tray is rigid, self-supporting yet fully adjustable. The upstand may be adjusted to suit cavities from 50mm up to 140mm. Should the cavity width deviate, the Type G upstand can vary to suit. The

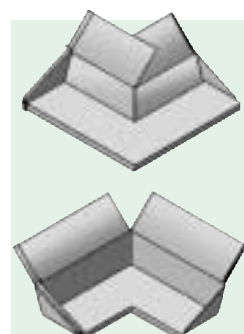
upstand does not require building-in to the inside skin. Therefore the inside skin may be of concrete blockwork, brickwork, cast concrete or timber frame. The Type G is always compatible.

The collection and dispersal of arrested water within the wall is in compliance with industry recommendations. Each tray is a self-contained unit with stand-alone evacuation of water via a weep-hole. Type G cavitytrays may be used with any of our approved caviweeps.

sizes

Standard profile suits most brickwork sizes incorporating cavities from 50mm in width up to 140mm in width. Standard lengths of 900mm, 675mm, 450mm plus infill lengths as required. Standard profile as illustrated. Internal and external angles are manufactured to stated sizes unless otherwise scheduled.

When required with a lead flashing attached to the tray, please specify the amount of lead to be left projecting and the lead weight (example: 150mm of code 4 lead left projecting). When supplied



Universal external angle.
220mm x 220mm.
For convenience, this angle is not handed and may normally be used for most external angle applications. (External angles specifically left or right-handed are available to special order)

Universal internal angle.
120mm x 120mm.
For convenience, this angle is not handed and may normally be used for most internal angle applications. (Internal angles specifically left or right-handed are available to special order)



* Standard product accommodates cavity up to 140mm. Specify flap extension for cavities up to 200mm.

phone 01935 474769 fax 01935 428223 email enquiries@cavitytrays.co.uk

Cavity Trays

Type G Cavitray

general-purpose cavitray for changes of level and building off the solid or ringbeam

- Easy and fast building-in with brickwork sized units
- Adjoining lengths interlock
- Adjustable upstand ensures cavity width compatibility
- Traditional or timber frame construction
- Unobstructed cavity compartment area
- Establishes consistent build quality detail

with an attached lead flashings, allowance is automatically made for flashings to overlap adjoining flashings. Special angles, corners etc., to accommodate piers and columns are available.

non-standard sizes

Bespoke service operates. Adaptations available to suit non-standard dimensions and applications, including wide front-to-back dimensions as encountered with stonework etc.

material

Petheleyne solid damp-course. Lead flashing to BSEN 12588, 1999.

colour

Black.
Lead flashing, natural.

installation/site work

Type G cavitrays should be bedded in mortar, and masonry bedded onto trays. Do not dry bed. Ensure weep/vents are incorporated within the external skin at tray level. Two weeps per tray length. Always position weeps towards centre of tray. Ensure all joints are made positively and the cavity upstand takes up the correct position.

bill of quantity wording

Type G general-purpose cavitray from Cavity Trays of Yeovil, Somerset BA22 8HU (01935 474769).

Size as standard (or specify size of trays required). Specify size of attached lead flashing (if appropriate).

Bed Type G cavitrays on mortar as work proceeds.

Observe usual codes of practice and standards.

Incorporate weepvents minimum of 2 per cavitray length.

Schedule of tray lengths = ... (number) x 900 = ...

Infilling lengths = ... (number x ... (length) = ...

Number of internal angles = ...

Number of external angles = ...

Request liability/conformity document upon completion.

Linking with other trays Type G cavitrays can be used and linked with Type X cavitrays.

Reference is made within the Type X cavitray pages.

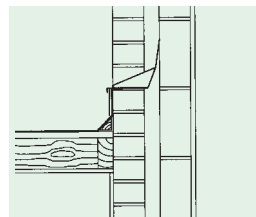
ordering/regulations

See inside back cover for details.

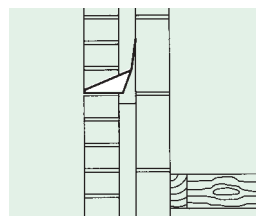
related products and applications

For existing walls see Type E. Type G general purpose

cavitrays require weepvents for water discharge. There are three styles available, see

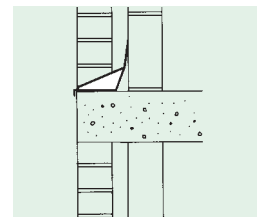


Type G cavitray with lead attached used at a change of level to ensure the horizontal intersection is correctly damp-proofed and weatherproofed.



Unlipped Type G cavitray used as an arresting barrier, to minimise cavity wash within the cavity wall. This arrangement invisibly reduces the penetrating water volume at a level above a critical junction. Appropriate with some masonry details and commonly used over projecting string courses and features (see separate entry dealing with arresting barriers).

Type W weepvent, Type Euroweep-vent, Beak weep and Small weepvent.



Type G cavitray used in ringbeam/concrete frame situation. The end upstands terminate against the vertical columns. The protective panoplied lip protects the bedding course.



Type G cavitrays with attached lead flashings provide protection to the front horizontal intersection. Note the Type X trays used above the sloping abutment terminate with an external angle. This provides a protective link with the Type G trays.



Type G provides the horizontal protection and Type X the stepped protection

technical observations

Part L airtightness of the inner skin is not compromised. The cavity upstand of the tray does not enter or interfere with the bonding.

Accommodates numerous cavity sizes. Suitable for traditional build and timber frame construction.

Projecting panoplied lip ensures integrity along bedding course. Integral stopends ensure correct termination of the DPC tray against piers, etc.

Unrestricted cavity catchment compartment moulding does not project or encourage mortar bridging.

Positive uniting sections not reliant on site gluing and sticking.

Self-supporting. Eliminates necessity to line up outer and inner support courses. Trasson cavity upstand rises to correct height.

Branded with name and logo as proof of type and accompanying warranty.



* Standard product accommodates cavity up to 140mm. Specify flap extension for cavities up to 200mm.