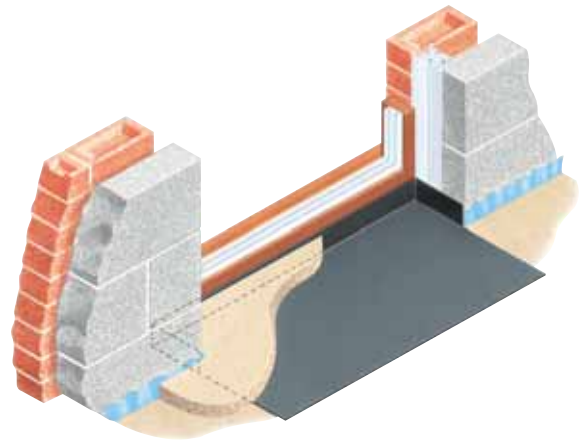


Type TST

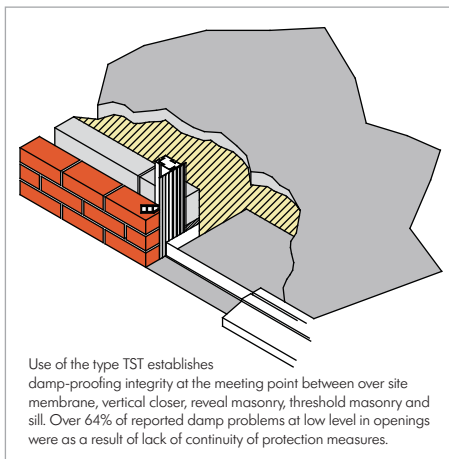
Threshold and Sill Overlay Tray



- Standardised ready-shaped solution for openings
- Ensures continuity of oversite membrane protection
- Not susceptible to misplacement or damage

USE

To alleviate damp protection shortfall at door openings where horizontal and vertical DPCs merge.



Use of the type TST establishes damp-proofing integrity at the meeting point between oversite membrane, vertical closer, reveal masonry, threshold masonry and sill. Over 64% of reported damp problems at low level in openings were as a result of lack of continuity of protection measures.

SOLUTION

The Type TST Tray is a moulded three-sided DPC overlay tray designed for use at door openings. It is positioned on the oversite prior to the laying of the screed. Its function is to ensure the damp external skin masonry and the vertical closing DPCs are isolated from and cannot connect with the screed. The Type TST ensures a protective layer exists against the reveals and the sill.

The base of the Type TST Tray is enveloped under the screed for the full width of the opening and provides an effective extension of the oversite membrane. It addresses localised DPC and membrane misplacement and aids regularisation of damage to these mediums that commonly occurs through foot traffic during the course of construction.

Where sills of low or minimal rise are incorporated, it can be particularly beneficial in establishing a positive interfacing.

The Type TST Tray provides the house builder with a means of constructing every door opening with the damp protection integrity intended and is used by some as a means of quality assurance control.

HOW TO ORDER

Standard – state masonry to masonry opening dimension.

Bespoke – advise dimensions of Type TST you require.

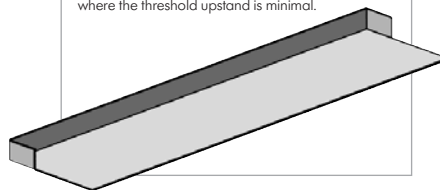
SPECIFICATION WORDING

Type TST Threshold Tray by Cavity Trays of Yeovil Somerset BA22 8HU (01935 474769).

Incorporate at all door openings prior to laying screed.

Request liability/conformity document upon completion.

The Type TST Tray is available in dimensions to suit all popular two-leaf patio door openings where the threshold upstand is minimal.



PRODUCT NAME - GROUP

Type TST

DIMENSIONS - STANDARD POPULAR WIDTHS

910mm, 932mm, 980mm, 1010mm, 1200mm, 1500mm, 1810mm, 2400mm

DIMENSIONS - STANDARD DEPTH – INBOARD

485mm (can be trimmed)

DIMENSIONS – SILL UPSTAND

115mm (can be trimmed)

DIMENSIONS - REVEAL UPSTAND

175mm (can be trimmed)

BESPOKE OPTIONS

Yes – all sizes can be chosen

TRADITIONAL CONSTRUCTION COMPATIBLE

Yes

TIMBER FRAME CONSTRUCTION COMPATIBLE

Yes

NEW WORK APPLICATIONS

Yes

RETROFIT APPLICATIONS

Yes if access possible

MASONRY SKIN STYLES

No known limitation – flat finishes

UNDULATING MASONRY FACES

Reveal faces must be flat

CONGRUENT WITH OTHER WALL ELEMENTS

Subject to specification check

ARRESTED WATER EVACUATION

None – barrier function only

THERMAL TRANSMISSION OF MATERIAL

Negligible

MATERIAL

Polypropylene DPC

COLOUR

Black

EXTRUDES / COMPRESSES UNDER LOAD

No

PACK SIZE

Available individually

CFC

CFC Free

ODP

Zero

REGULATION COMPLIANCE

To aid correct status



DESIGNERS' COMMENTS

The original BRE investigation of traditional housing identified 955 faults and 11th on the list was missing/faulty damp courses to door sills and thresholds. Textbook methods do not take into account damage that occurs to membranes left protruding especially at door openings and in particular where the vertical element interfaces. The Threshold overlay tray can re-establish the intended arrangement when incorporated at openings and is used by leading house builders as a means of maintaining trouble-free consistency of construction.