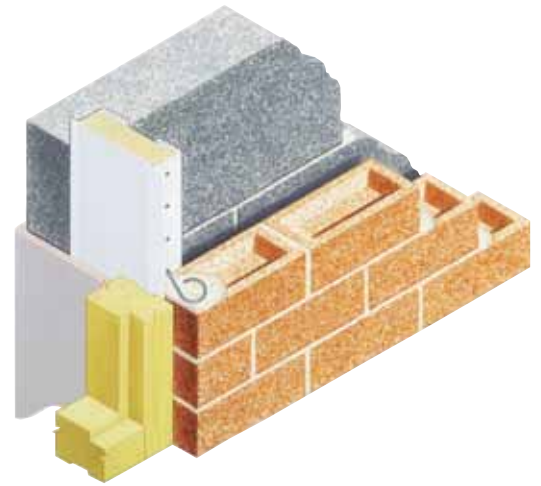


# Type WCA

## Closer for wide cavity installations

- Closes cavities up to 200mm wide
- Function as vertical DPC
- Insulates reveal
- Permits choice of frame positions
- Micro fins



### SOLUTION

WCA stands for wide cavity applications. The large insulating core promotes excellent thermal qualities. The WCA is available to suit cavities up to 200mm wide and is secured in position using accompanying ties.

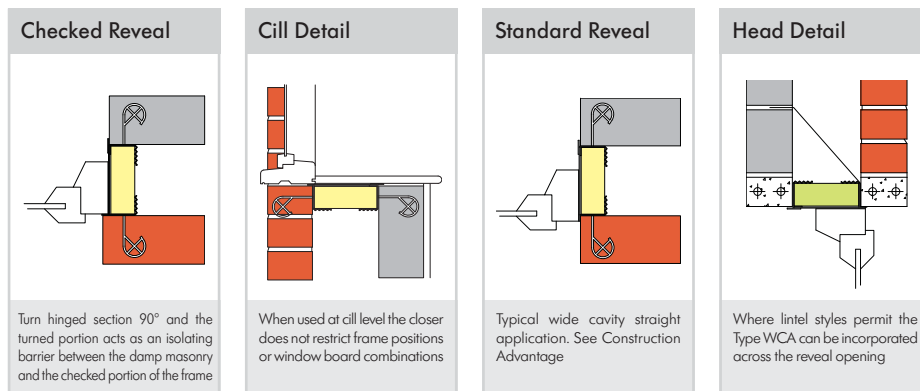
The side of the closer nearest the inner leaf has a friction fit relationship with the rest of the closer body. Thus in timber frame construction the closer can be screwed or nailed to the inner leaf, and the arrangement can benefit expansion and contraction provision.

### REFERENCES

- Investigating Rainwater Penetration of Modern Buildings (Masonry 129)
- Building Regulations Part L
- British Standard 5628-3
- BRE Thermal Insulation Avoiding Risks
- Website: [cavitytraystandards.co.uk](http://cavitytraystandards.co.uk)
- Robust Details
- Scottish Tech Standards Part D

### SPECIFICATION WORDING

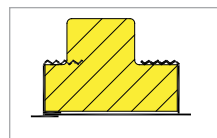
Type WCA Cavicloser by Cavity Trays of Yeovil Somerset BA22 8HU (01935 474769) to close cavity wall reveal. State actual cavity width.



COMPUTER REFERENCE CODES:  
**TYPE WCA 2.1M** (STATE ALSO CAVITY WIDTH)  
**TYPE WCA 3.0M** (STATE ALSO CAVITY WIDTH)

### CONTINUITY ADVANTAGE OPTION

An optional extended insulating core (similar to Continuity Closer) can be provided on this product so it can interface with partial fill insulation. Option available only where cavity width is 100mm or more. State clearly if this interfacing option is required.



### DESIGNERS' COMMENTS

In timber frame applications direct screw fixing to the inner leaf is possible as closer has an integral friction link moulding offering some vertical differential movement provision. See also checked reveal hinge advantage.

<b>PRODUCT NAME - GROUP</b>	Type WCA Cavicloser
<b>EXPOSURE RATING</b>	Severe 30+mm setback. Very severe when checked
<b>CAVITY - STANDARD SIZES ACCOMMODATED</b>	From 100mm up to 200mm
<b>SPECIAL CAVITY WIDTHS ACCOMMODATED</b>	Yes - bespoke closer service offered
<b>STRAIGHT REVEALS</b>	Yes - build in profile as supplied
<b>CHECKED REVEALS</b>	Yes - build in as checked illustration
<b>PRODUCT LENGTHS</b>	2.1m, 3.0m
<b>ACTS AS VERTICAL DPC</b>	Yes
<b>ACTS AS INSULATOR</b>	Yes
<b>PERMITS DIFFERENT FRAME POSITIONS</b>	Yes
<b>FRAMES FITTED AS WORK PROCEEDS OR LATER</b>	Yes - first or second fix options
<b>TIMBER FRAME* / TRADITIONAL CONSTRUCTION</b>	Both styles *integral movement link
<b>MASONRY SKIN STYLES</b>	All popular flat faced masonry
<b>UNDULATING MASONRY FACE FINISHES</b>	Seek advice providing details of material
<b>ACOUSTIC INSULATOR</b>	Yes reduces sound flanking transmission
<b>FIRE RATED</b>	No (see Cavi prefixed WCA for fire rated)
<b>VERTICAL AND HORIZONTAL APPLICATIONS</b>	Yes - see examples
<b>COMPATIBLE WITH OTHER CAVITY WALL ELEMENTS</b>	No identified restrictions
<b>SECURING TIES SUPPLIED</b>	Yes
<b>PACK SIZES</b>	x 6 lengths
<b>WEIGHT PER PACK</b>	2.1m x 6 = 14.5kg. 3.0m x 6 = 21kg.
<b>MATERIAL</b>	PVCU + polystyrene inskorfoam
<b>COLOUR</b>	White
<b>BUILDING REGULATIONS</b>	Yes regulations can be satisfied
<b>NHBC</b>	Yes requirements can be satisfied
<b>'K' VALUE OF INSULATIONS USED</b>	0.033W/mK / 0.038W/mK as standard
<b>CFC FREE</b>	Yes + zero ODP
<b>CAD DRAWING DOWNLOADS AVAILABLE</b>	Yes

