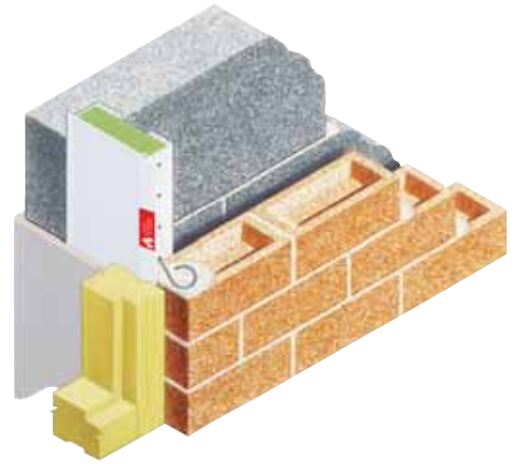


Cavi60

Type WCA Cavicloser

- 60 minutes fire integrity rated stops
- Acts as a DPC
- Accompanying stainless steel anchoring ties
- For cavity widths up to 150mm
- Micro fins



SOLUTION

With a one hour fire rating and a maximum cavity width accommodated of 150mm, the Cavi 60 Type WCA provides a robust method of closing and protecting wider reveals. The large sound-absorbing insulation core is secured behind the heavy duty ribbed face which permits an unrestricted choice of frame positions within thermally efficient parameters.

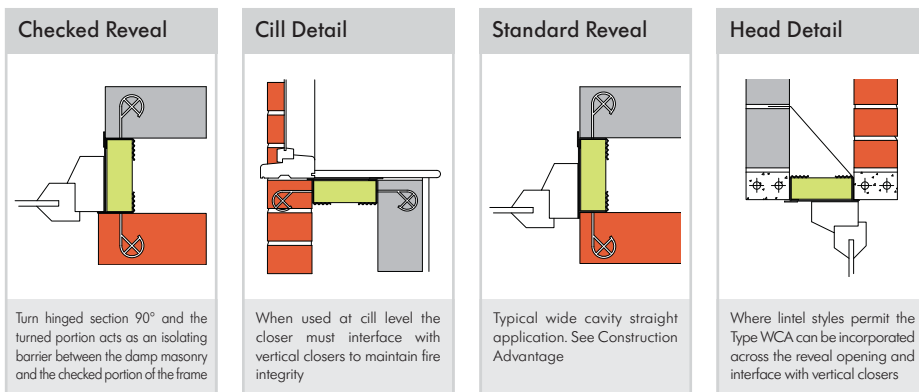
REFERENCES

- BS 476 (fire resistance testing)
- Part E details – resistance to the passage of sound

- Building Regulations Document C L1 & L2
- Scottish Tech Standards Part D
- Robust Details
- British Standard 5628-3
- BRE Thermal Insulation Avoiding Risks
- BS EN ISO 10211: Thermal bridges in building construction

SPECIFICATION WORDING

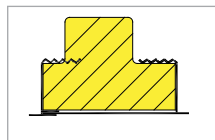
Cavi 60 Type WCA Cavicloser by Cavity Trays of Yeovil Somerset BA22 8HU (01935 474769) to close cavity wall reveal and provide one hour fire integrity rating. State actual cavity width.



COMPUTER REFERENCE CODES:
CAVI 60 WCA 2.1 100 CAVI 60 WCA 3.0 100
CAVI 60 WCA 2.1 150 CAVI 60 WCA 3.0 100

CONTINUITY ADVANTAGE OPTION

An optional extended insulating core (similar to Continuity Closer) can be provided on this product so it can interface with partial fill insulation. Option available only where cavity width is 100mm or more. State clearly if this interfacing option is required.



DESIGNERS' COMMENTS

In timber frame applications direct screw fixing to the inner leaf is possible as closer has an integral friction link moulding offering some vertical differential movement provision. See also checked reveal hinge advantage.

PRODUCT NAME - GROUP

Cavi 60 Type WCA Cavicloser

EXPOSURE RATING

30+mm setback. Severe Very severe when checked

CAVITY - STANDARD SIZES ACCOMMODATED

From 100mm up to 150mm

SPECIAL CAVITY WIDTHS ACCOMMODATED

Yes bespoke closer service offered

STRAIGHT REVEALS

Yes – build in profile as supplied

CHECKED REVEALS

Yes – build in a checked illustration

PRODUCT LENGTHS

2.1m, 3.0m

ACTS AS VERTICAL DPC

Yes

ACTS AS INSULATOR

Yes

PERMITS DIFFERENT FRAME POSITIONS

Yes

FRAMES FITTED AS WORK PROCEEDS OR LATER

Yes – first or second fix options

TIMBER FRAME* / TRADITIONAL CONSTRUCTION

Both styles accommodated *integral movement link

MASONRY SKIN STYLES

All popular flat faced masonry

UNDULATING MASONRY FACE FINISHES

Seek advice providing details of material

ACOUSTIC INSULATOR

Yes – insulation promotes reduction

FIRE RATED

Yes Prefix denotes 60 mins (1 hr) fire rating

VERTICAL AND HORIZONTAL APPLICATIONS

Yes – see examples

COMPATIBLE WITH OTHER CAVITY WALL ELEMENTS

No known restrictions

SECURING TIES SUPPLIED

Yes

PACK SIZES

x 6 lengths

WEIGHT PER PACK

2.1m x 6 = 20kg. 3m x 6 = 28.5kg.

MATERIAL

PVCU + rock wool insulator + stainless ties

COLOUR

White

BUILDING REGULATIONS

Yes regulations can be satisfied

NHBC

Yes requirements can be satisfied

'K' VALUE OF INSULATION USED

0.035W/mK

CFC FREE

Yes + zero ODP

CAD DRAWING DOWNLOADS AVAILABLE

Yes

