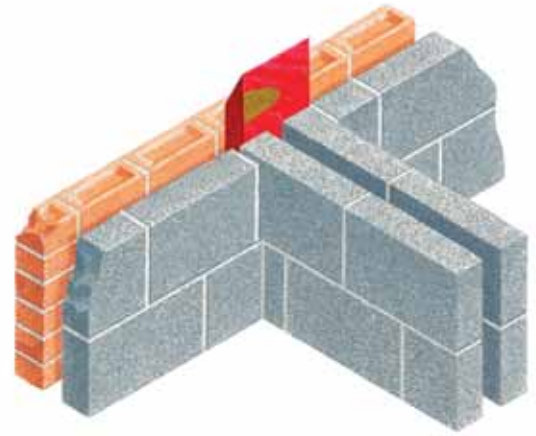


Cavi240

Type SAF Vertical Cavity Barrier / Stop (previously listed as Type PWIB)

- Acoustic Barrier
- Fire Barrier – 4 hours rating
- Sloping shape deflects water forward
- Easy linking and continuity



SOLUTION

This vertical dual-function barrier is for use where separating walls (party walls) join exterior cavity walls. The barrier introduces a four hour rated fire integrity level and acoustic cushioning as demanded by legislation. The ends of the Cavi 240 Type SAF Vertical Barrier are angled so that each vertical length wedges into and against the vertical length under it, promoting continuity. Water cannot permeate inwardly because all joints are made sloping forward towards the outer leaf (as with the horizontal SAF barrier).

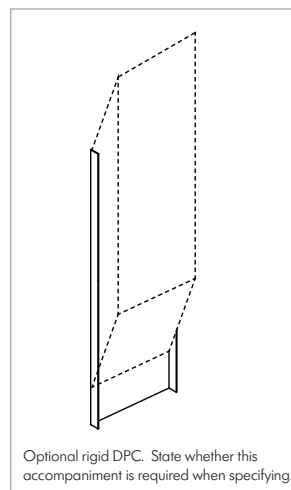
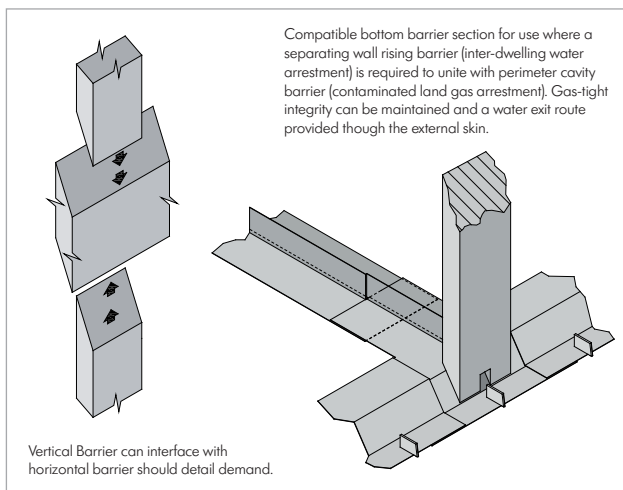
Vertical barriers are enveloped within a polythene sleeve sufficiently robust to act as a DPC, as defined by NHBC / Building Regulations. In applications where a rigid DPC presence is

also required, the barrier is available with a semi-rigid polypropylene DPC bonded to one side. The specifier has the choice of two formats, both of which permit compliance in a manner most appropriate for the specific build detail.

Cavi 240 Type SAF vertical barriers are available in a range of standard and bespoke sizes. Models also made for solid walls. (This product supersedes the Cavi 240 Type PWIB).

SPECIFICATION WORDING

Cavi 240 Type SAF Vertical Cavity Barrier by Cavity Trays of Yeovil Somerset BA22 8HU (01935 474769). To close all party wall / external wall vertical intersections.



DESIGNERS' COMMENTS

Adoption of this approach can allow you to use a default value of 0.2. Should the party wall incorporate measures to prevent inter-dwelling water (spillage/flooding) contamination as defined by NHBC/Robust Details, the presence of a vertical barrier can block the intended water exit path. To overcome this problem a starter section of the Cavi 240 Type SAF Vertical Barrier that maintains an exit route can be supplied for placement at the base of the intersection. The section also offers compatibility where an exterior wall cavity gas barrier is present. A Type W caviweep-vent is incorporated to facilitate discharge through the exterior skin. Fire and acoustic integrity to both dwellings can be maintained. Every building that is divided into more than one area of different occupation must be designed and constructed in such a way that in the event of an outbreak of fire within the building, fire and smoke are inhibited from spreading beyond the area of occupation where the fire originated. 2.2 BR(S) – mandatory

PRODUCT NAME - GROUP	Cavi 240 Type SAF Vertical Barrier
EXPOSURE RATING	Very severe
CAVITY - STANDARD SIZES ACCOMMODATED	50mm, 65mm, 75mm, 100mm
SPECIAL CAVITY WIDTHS ACCOMMODATED	Yes - bespoke service offered
PRODUCT LENGTHS	1200mm x 300mm (typical)
PRODUCT CORNERS	Internal and external in matching dimensions
ACTS AS VERTICAL DPC	Yes
ACTS AS INSULATOR	Yes
TIMBER FRAME / TRADITIONAL CONSTRUCTION	Both styles accommodated
MASONRY SKIN STYLES	All popular flat faced masonry
UNDULATING MASONRY FACE FINISHES	Seek advice providing details of material
ACOUSTIC INSULATOR	Yes
FIRE RATED	Yes – Cavi 240 denotes 240 minutes rating
VERTICAL AND HORIZONTAL APPLICATIONS	Vertical only – see adjacent page for horizontal barrier
COMPATIBLE WITH OTHER CAVITY WALL ELEMENTS	Yes – see Designers' Comments reference starter section
SECURING TIES SUPPLIED	N/A compression held and wedge holds on lower
PACK SIZES	Lengths available individually
INSULATION K VALUE	Rock MW 0.035W/mK
COLOUR	Red envelopment, black DPC
BUILDING REGULATIONS	Yes regulations can be satisfied
NHBC / ROBUST DETAILS / BUILDING REGULATIONS	Yes requirements can be satisfied
CFC FREE	Yes + zero ODP
ECO POINTS RATING	Low
CAD DRAWING DOWNLOADS AVAILABLE	Yes

