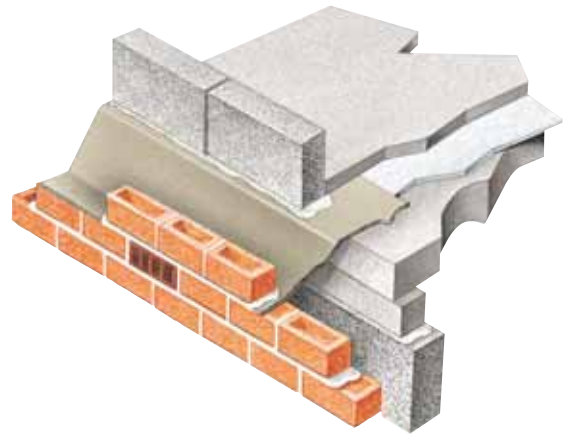
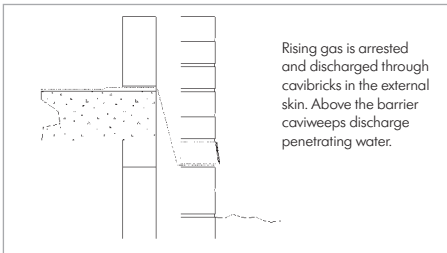


Protection from oversite & through the cavity walls



USE

Radon cavity barriers are built in all the exterior cavity walls at ground level around the building. Their function is to arrest radon gas rising in the wall cavity - that would otherwise act as a conduit for gas. Instead gas is prevented from rising and is exhausted out of the cavity wall via cavibricks installed at intervals under the cavity barrier level. The barrier is shaped so any water permeating above and collecting on it is discharged via Caviweeps.



Importantly barrier presence is uninterrupted and unpunctuated from outside face to oversite where it laps and seals with the oversite membrane. In some applications (pending levels) the radon cavity barriers may act also as a wall DPC. Barrier lengths are manufactured in all profiles to suit the project.

Matching profiled angles and preformed drops accommodate changes of level, corners and maintain integrity across openings.

SPECIFICATION WORDING

Radon Gas cavity barriers by Cavity Trays of Yeovil Somerset BA22 8HU (01935 474769). Incorporate radon cavity barriers at appropriate levels within all exterior walls. Ensure all barrier lengths, steps and corner profiles are lapped and sealed as accompanying instructions. Inboard section of barrier to lap and be sealed with oversite membrane to provide unpunctuated protection.

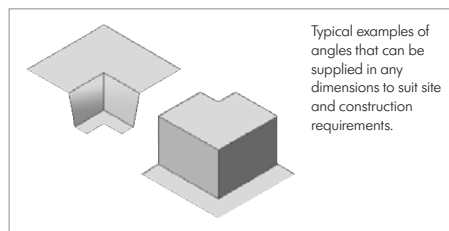
DETERMINING YOUR REQUIREMENTS

We recommend advantage is taken of our take-off service. We will be pleased to calculate your requirements and submit a proposal and scheduled for your consideration.

SPECIFICATION WORDING

Radon Cavity Wall Barrier lengths and angles by Cavity Trays of Yeovil Somerset BA22 8HU (01935 474769).

Install radon cavity wall barrier lengths and angles at appropriate stage in accordance with accompanying instructions and schedule observing best practice.



PRODUCT NAME

Radon Cavity Barriers

DIMENSIONS

Profile to suit wall detail Supplied in 2440mm lengths

Angles / Steps

Preformed to match profile.

Std angles 450mm x 450mm

JOINTING METHOD

Lap and integrity seal strip supplied in 30m rolls

JOINTING METHOD

Lap + integrity seal tape

MATERIAL

Petheleyne CTR 1.4 <1.6

RADON PERMEABILITY

Less than $1.6 \cdot 10^{-12} \text{m}^2 \text{s}^{-1}$

COLOUR

Black

DESIGNERS' COMMENTS

Without uninterrupted interfacing of oversite membrane with cavity barrier, the protection will be discontinuous at one of the most vulnerable points – between floor and wall. Incorporating a cavity barrier that commences at the exterior skin face and projects through and beyond the cavity wall so it can seal with the oversite membrane ensures shielding measures are maximised.

See NHBC 4.1- D7 and 5.2-D4. Be aware that areas identified as radon-affected are based on existing property readings and if you are constructing to a different standard you might reasonably expect your new property to perform differently. Consider whether radon gas might accumulate to a greater extent within a property that is constructed to more air-tight standards?