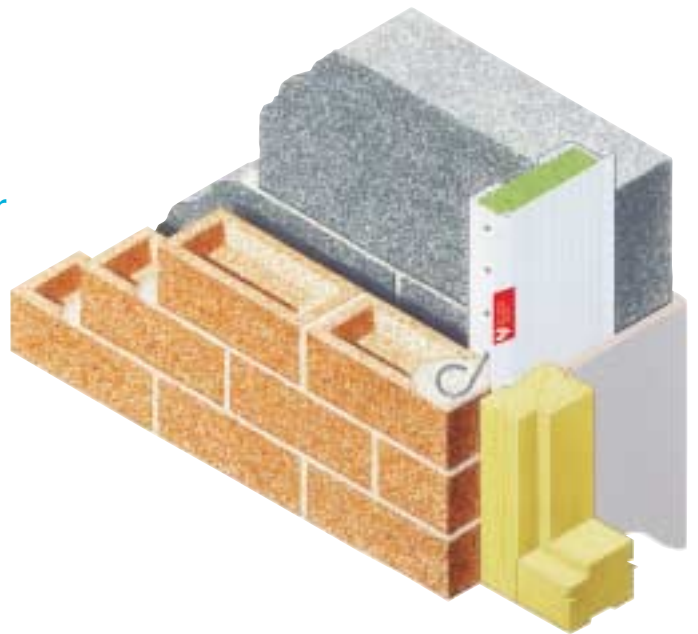


Cavi60 Type WCA Cavicloser

(wide cavity applications) Firestopcloser



- 60 minutes fire integrity rated stops
- Acts as a DPC
- Accompanying stainless steel anchoring ties
- For cavity widths up to 150mm
- Micro Fins

CLOSER SECTION

designers' comments

Testing principles BS 476: pt. 20:1987. Furnace temperatures applied from inside cavity outwards. Furnace temperature maximum level during testing: 1001 Deg.C. Sampled thermal conductivity of insulation 0.033 W/mK. Sampled insulation thermal resistance typical 1.515 to 4.545 (m² K/W). An enhanced Cavi90 rating (one and a half hours) may be prefixed to this product in some specific applications.

Ask for a copy of the British Standard testing procedure employed so you fully understand how and the circumstances under which this product has been rated. Employers and agents have statutory duties regarding liabilities for risk assessment. Ensure your design meets the required standard. All advice is inevitably generalised and you should ensure it is relevant to the specific circumstances in which you seek to apply it.

problem

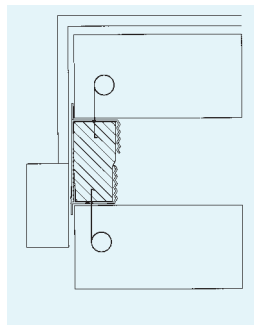
How to close, insulate and form a vertical DPC to a cavity wall reveal and provide 60 minutes fire integrity.

introduction

The Cavi60 prefix identifies this cavicloser as having 60 minutes fire integrity rating. The WCA is an abbreviation for wide cavity applications. The Cavi60 Type WCA is a robust closer specifically designed to close wider cavities

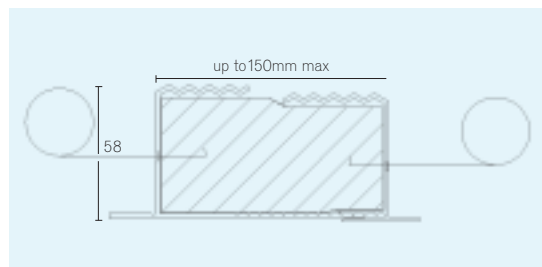
solution

The Cavi60 Type WCA is available to order to suit cavity widths within the range of 100mm up to 150mm - being



Type Cavi60 WCA used in straight reveal.

the maximum cavity width in which this closer has been vertically tested and approved. The fire integrity rating is achieved with the use of a non-combustible semi-rigid rock mineral wool insulating medium, bonded with a high performance binder. The heavy-duty robust extrusion



provides the designer with a choice of frame positions within the restraints of thermally efficient options.

Accompanying ties secure the closer housing containing the bonded rock wool. The tying and restraint measures therefore anchor the closer into both skins of the masonry wall.

Testing of this fire integrity rated closer was carried out with the fire source applied from both sides, room side and cavity side.

sizes

70mm x cavity width required within range. Suitable for cavities of 100mm up to 150mm, (state requirement). Available in lengths of 2.1m and 3.0m. Lengths of 3.6 metres available to special order.

material

PVCU compound. Stainless steel ties. Non-combustible semi-rigid rock mineral wool insulation bonded with high performance binder.

ordering/regulations

See inside back cover for details.

bill of quantity wording

Close all reveal cavities vertically with fire-rated Cavi60 Type WCA cavicloser by Cavity Trays of Yeovil, Somerset. BA22 8HU (01935 474769). Build-in strictly in accordance with manufacturer's instructions. Cavity width = Lin metre run =.....

related products and applications.

See all closers bearing a Cavi rating prefix for alternatives.



phone 01935 474769 fax 01935 428223 email enquiries@cavitytrays.co.uk

Cavity Trays