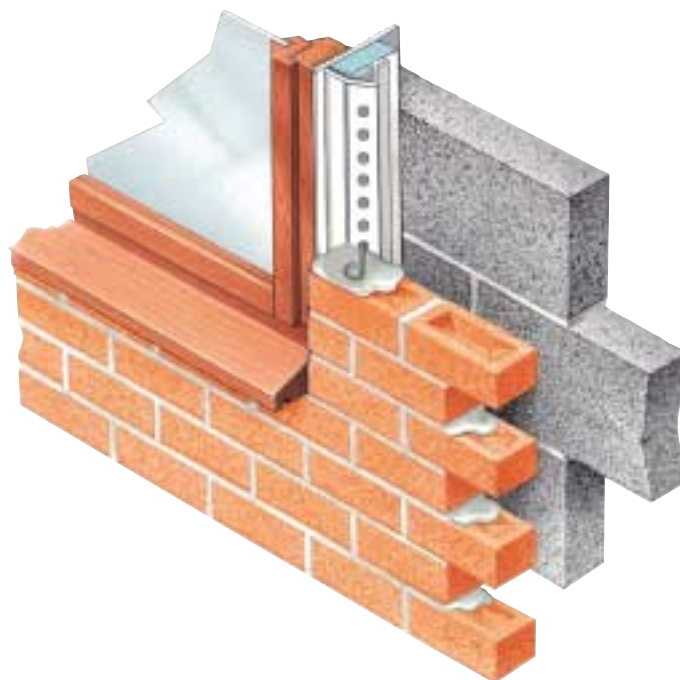


Type V Contract Closer



- Closes cavity and acts as a DPC
- Insulates the reveal
- Range of cavity widths offered
- Eliminates need to cut and return masonry
- Cost-effective standardised detail
- Anti capillary Fins

CLOSER SECTION

designers' comments

This model cannot be displaced in the manner witnessed of roll DPC when used in the vertical plane. It provides an easy way of addressing the requisite U value demanded by the Building Regulations. The Finned face benefits an anticapil relationship between surfaces, and aids drainage of penetrating rainwater, recognising the implications of temperature swings that are more pronounced where higher levels of thermal insulation exist in cavity walls.

technical observations

Closes cavity and acts as a DPC
 Insulates the reveal.
 Range of cavity widths offered.
 Eliminates need to cut and return masonry.
 Cost-effective standardised detailing for all openings.
 Avoids the problems associated with conventional (floppy) DPCs as described in BRE report: 'Quality in Traditional Housing.'
 Branded with name and logo as proof of type and accompanying warranty.



problem

How to close, insulate and establish vertical DPC to reveals.

introduction

Closing of a cavity wall reveal may be easily and economically undertaken using the Type V contract closer. Supplied in a range of set cavity widths, this product is ideal for use on contract housing developments, in which the build specification and dimensions are repetitive and standardised.

solution

Manufactured from PVCU, the Type V is a one part closer consisting of a ribbed face section which spans the open cavity and overlays the inner and outer skins of masonry. Secured behind this face is a closed cell insulating core, which is accommodated within the cavity. Integral holes to both sides of the capillary-break V shaped core housing, accept ties and secure the closer to the masonry skins. The upgraded Type V contract closer permits frames to be fitted in any position within the depth of the reveal.

sizes

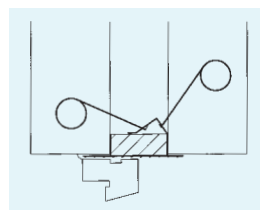
Supplied in lengths of 21 metres and 3.0 metres.
 V50 suits 50mm cavity.
 V65 suits 65mm cavity.
 V75 suits 75mm cavity.
 V100 suits 100mm cavity.
 Available for other specific widths.

material

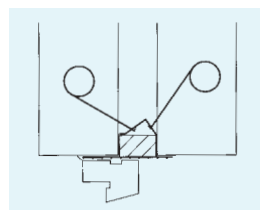
PVCU white. Polystyrene closed cell insulator. Insulator sampled thermal conductivity analysis in typical cavity: 0.037. Stainless steel ties.

colour

White. Ties stainless steel.



Type V in 75mm cavity



Type V in 50mm cavity

installation/site work

Cut Type V to appropriate length and locate. Incorporate ties at specified centres as masonry is raised, ensuring Type V is firmly enveloped and secured. Observe good building practice. Read the full instructions that accompany this product before commencing work.

bill of quantity wording

Type V contract closer to suitmm cavity by Cavity Trays of Yeovil, Somerset. BA22 8HU. (01935 474769.) Incorporate Type V closer (specify V50, V65, V75 or V100) as reveal masonry is raised, securing with ties, all in accordance with manufacturer's instructions that accompany product. Request liability/conformity document upon completion.

ordering/regulations

See inside back cover for details.

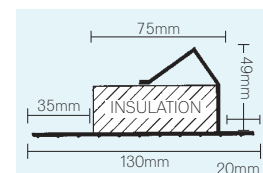
related products and applications

See also Type H universal cavicloser. The alternative quickcloser model

accommodates numerous cavity widths and deviancies utilising a flexible insulating medium. The Type D is an insulated DPC for new work and the Type O is specifically for existing cavity applications.

important

Closers aid thermal efficiency and compliance of regulation requirements dependent on all associated and adjacent work being constructed to the most beneficial design using materials that promote optimum thermal performance with frames being positioned to provide the maximum thermal efficiency in accordance with best practice dimensions and legislation.



Type V dimensions (insulation size varies to suit cavity width)