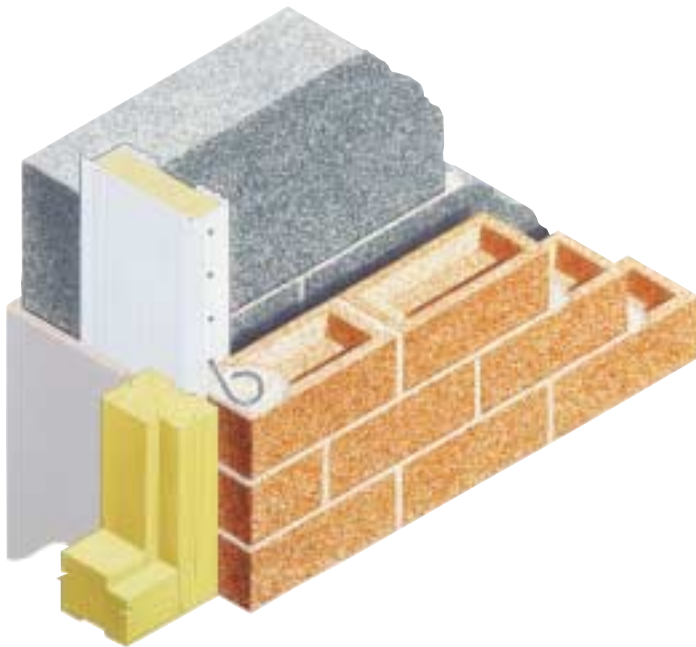


# Type WCA

closer for wide cavity applications



- Closes cavities up to 200mm wide
- Function as vertical DPC
- Insulates reveal
- Permits choice of frame positions
- Micro Fins

## problem

How to close and create reveals in cavity walls in a thermally proficient manner where the cavity is up to 200mm wide. How to establish vertical DPC integrity.

## introduction

In wide cavity applications the closing of reveals was previously restricted to predominately traditional masonry construction methods. The Type WCA for wide cavity applications provides a ready-made alternative approach with accompanying benefits.

## solution

Manufactured from extruded PVCU, the Type WCA is a one-part closer available in dimensions to suit all cavity widths within the 100mm to 200mm range. The heavy-duty body overlays the inner and outer skins, permitting the

installer unrestricted frame location positions within the compliant parameters. The insulating core of inskorfoam/ polystyrene provides the reduction barrier against thermal conductivity.

As well as closing the reveal and reducing cold bridging, the Type WCA also acts as a vertical DPC. The Cavidoser is anchored to both cavity skin using accompanying stainless steel ties. Available to accommodate cavity widths from 100mm up to 200mm, the Type WCA can be supplied in width increments to provide a robust preformed solution for unusual widths and applications.

## sizes

70mm x cavity width required within range. Suitable for cavities of 100mm up to 200mm, (state requirement). Available in lengths of 2.1m and 3.0m.

## material

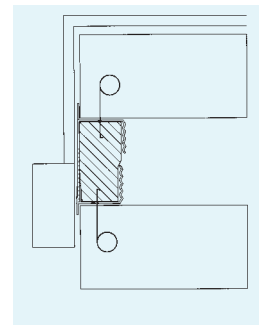
PVCU compound.  
Stainless Steel ties.  
Inskorfoam / polystyrene 0.037 typical conductivity analysis.

## ordering/regulations

See inside back cover for details.

## bill of quantity wording

Close all reveal cavities vertically with fire-rated Type WCA cavicloser by Cavity Trays of Yeovil, Somerset. BA22 8HU (01935 474769). Build-in strictly in accordance with manufacturer's instructions. Cavity width = ..... Lin metre run =.....

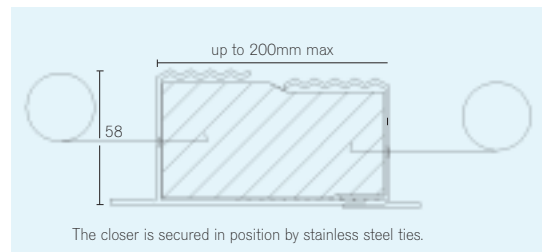


Type Cavi60 WCA used in straight reveal.

## related products and applications

See other entries within this section.

For wide cavity applications plus fire integrity, see Cavi 60 Type WCA in this section.



The closer is secured in position by stainless steel ties.

## designers' comments

For WCA with fire integrity rating, see Cavi60 Type WCA. This model may be used in traditional and timber frame construction. In timber frame construction if closer is screwed to inside frame, utilise accompanying ties to secure to the external masonry whilst introducing vertical differential movement tolerance provision behind frame surround. The Type WCA was originally only available in a fire-integrity rated version. Whilst the fire-integrity rated model is the most popular format (see Cavi 60 Type WCA), we faced continuing demands to release a standard version for domestic applications. Thus this model is primarily used where a wide cavity is encountered and there is no accompanying requirement to incorporate fire protection measures under the Building Regulations. Maximising frame overlap can promote greater thermal benefit. Suggested minimum overlap is 45mm.

## technical observations

Branded with name and logo as proof of type and accompanying warranty.

