

# Type M Cavitytray

for use over meter boxes



Type M Cavitytray for use over meter boxes.

DAMP-PROOFING

- Self-supporting upstand adjusts to cavity widths
- Traditional or timber-frame construction
- Unobstructed cavity compartment area
- Ensures compliance with guidance standard

## designers' comments

NHBC Standards effective from January 2000 qualify that where a meter box is not protected by a roof at an appropriate level, a DPC tray should be provided. See 61 - S4 (e). The new British Standard 5628-3:2001 stipulates cavity wall design should be based on the assumption that water penetrates the outer leaf of the wall, even if it is rendered. (5.5.71)

## technical observations

Accommodates numerous cavity sizes.  
Suitable for traditional build and timber-frame construction.  
Unrestricted cavity compartment area does not encourage mortar bridging.  
Self-supporting.  
Eliminates necessity to line up inner and outer support courses.  
Branded with name and logo as proof of type and accompanying warranty.

## problem

Preformed cavitytray for use over standard meter boxes (gas or electricity).

## introduction

The Type M cavitytray provides horizontal protection against damp penetration where a cavity wall accommodates an electricity or gas meter consumer supply control unit (meter box).

## solution

The Type M cavitytray is manufactured to suit the standard size box now extensively used on most housing developments.

The electricity and gas apparatus within consumer meter boxes must be maintained in an environment free of damp etc. Dampness must also be prevented from reaching the inside skin of the cavity wall, via the 'bridging' consumer unit. The Type M cavitytray fulfils these requirements.

The length of each tray suits standard meter boxes and

provides sufficient overhang to each side. The base of the Type M suits standard thickness exterior skins of brickwork, blockwork, etc., whilst the cavity upstand of the Type M automatically adjusts to suit most cavity widths from 50mm up to 140mm. Type L stopends and weepvents are compatible with the Type M.

## sizes

Standard tray length 600mm. Standard profile as illustration. Cavity upstand overall height 150mm. Cavity upstand adjusts to accommodate cavity sizes from 50mm up to 140mm.

## material

Polypropylene.  
Lead BSEN 12588:1999.

## colour

Black.

## installation/site work

Type M cavitytrays should be bedded in mortar and masonry bedded onto trays. Do not dry bed. Ensure the cavity upstand takes up the

correct position. Position in first appropriate course above meter box.

## bill of quantity wording

Type M cavitytray from Cavity Trays of Yeovil, Somerset BA22 8HU (01935 474769).

Standard size Type M cavitytray (or state any special requirements). State whether flashing attached is required. Bed Type M cavitytray on mortar as work proceeds.

Observe usual codes of practice and standards. Total standard number required = .... Request liability/conformity document upon completion.

## ordering/regulations

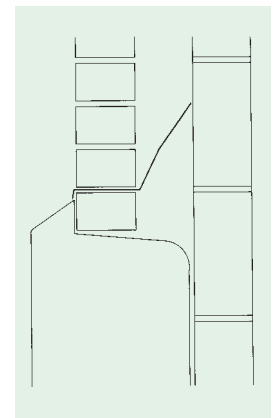
See inside back cover for details.

## related products and applications

For stopends which harmonize with the Type M, see Type L. For water discharge from the Type M via perps, see Type W

weepvent, Euroweep-vent, beak weep and small weepvent.

For general-purpose horizontal intersection applications, see Type G Cavitytray. Standard external meter boxes issued by the Gas and Electricity Companies have an external surround, the top section of which can trap water. Consider sealing/filling this using Siliconbond.



Standard Type M, with protective external lip finish.

