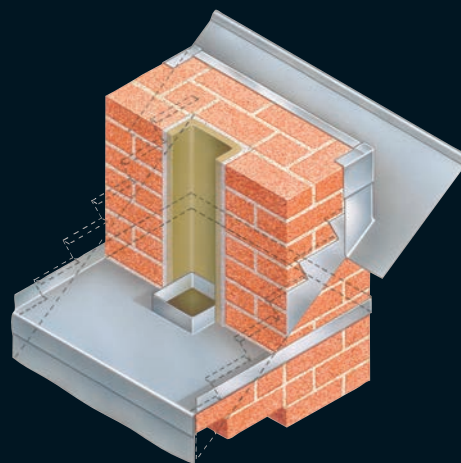


# Lead Products / Supply

- Standard and bespoke fabrications
- BS EN 12588 material
- Widths to 2400mm (rolls)
- Various lead weights/thicknesses

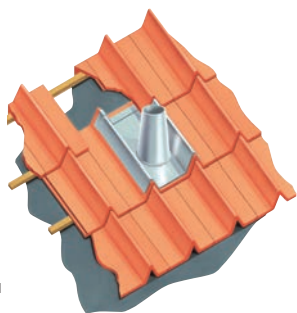


## USE

Lead remains one of the most malleable and durable materials for flashings and weather resistant construction connections. Its longevity makes lead an attractive medium where a building life in excess of the sixty years demanded by Eurocode requirements is sought. We manufacture standard and bespoke products using cold rolled milled lead to BS EN 12588:2006.

### Coneslate

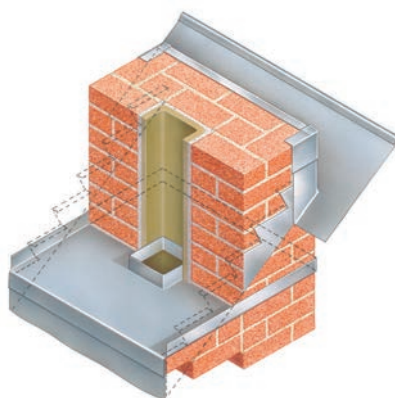
The Coneslate is an improved version of the traditional lead slate used whenever a soil pipe penetrates a pitched roof of tiles, slates or contoured roofing sheets. Its tapered sides permit the Coneslate to service a range of roof/pipe angles rather than being suitable for one pitch only. Example: 30° Coneslate has a range of  $\pm 10^\circ$  so may be used on roof pitches from 20° to 40°. The tapered sides also make stacking storage possible. Suitable for new and retrofit applications the standard base size is 400mm x 405mm with a sleeve height of 415mm to suit a 100mm diameter.



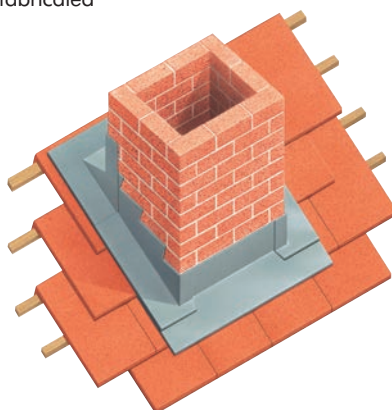
All dimensions can be varied to suit requirements.

### Chimney Stack Protection

Stack Packs are offered on a made to measure basis. Front apron, back gutter, side flashings and stack integrity trays at high and low level are



supplied observing LSA guidelines. The normal flashing weight used for stack flashings is code 4 unless otherwise requested. Roll lead is supplied for side flashings, other components are fabricated



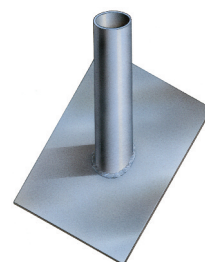
### Roof Outlets

Roof Outlets with variable base dimensions and 90° drop outlets in a variety of diameters are fabricated to order



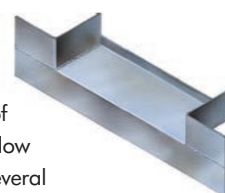
### Thatched Roof Slate

The Thatched Roof Slate is supplied with an elongated collar that extends through the thickness of the thatch permitting a weather tight integration with the soil pipe above the finished roof level.



### Timber Studding Window Flashing

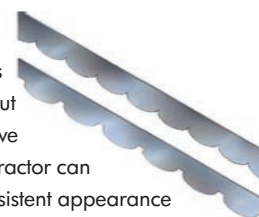
Where a window sits within exterior stud walling, the use of a Stud Wall Window Flashing offers several advantages. Supplied as one unit, it eliminates joints at the vulnerable junctions between frame and studwork. There are no open links and as well as wrapping around the studwork and flashing also returns upwards at the back of the sill. The front apron dresses over the tile hanging or similar.



### Decorative

#### Flashings

Lead flashing is available pre-cut with a decorative edge. The contractor can maintain a consistent appearance throughout a development and eliminate wastage associated with site-cut approaches.



## DESIGNERS' COMMENTS

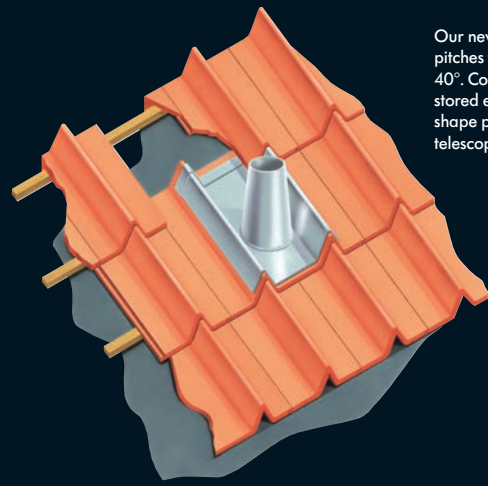
When a roof has two different types of metal present, galvanic or bi-metallic corrosion will take place when those metals become damp or wet. One metal will remain relatively protected, whilst the other suffers accelerated corrosion. Flashings around metal roofs are ideally of the same material as the roofing surface, or of a compatible material / product that is accompanied with supporting documentation. When a roof has two different types of metal present, galvanic or bi-metallic corrosion commonly takes place when those metals become damp or wet. The metals higher on the list will sacrifice themselves for metals lower on the list.

- Zinc/Zinc/aluminium/Aluminium
- Steel
- Lead
- Copper
- Stainless Steel

Thus run off from zinc to copper is tolerable, but not from stainless to zinc.

# Lead Products / Supply (continued)

- Standard and bespoke fabrications
- BS EN 12588 material
- Widths to 2400mm (rolls)
- Various lead weights/thicknesses



Our new Coneslate suits pitches from 20° up to 40°. Coneslates can be stored easily as the shape permits telescopic stacking.

## CUT SHEET SERVICE / ROLL SUPPLY SERVICE

Pre-cut sheets and pieces are available. We recommend observance of restricting cut sizes to within the maximum lengths and widths recommended by the Lead Sheet Association. Maximum roll size is 2.4metres x 6 metre. Weights available up to code 8.

## BESPOKE LEADWORK

Our bespoke service offers made to measure fabrications in a variety of lead weights. We will be pleased to quote. Fixing block weather caps, head flashings and butterfly crossovers are examples.



Chimney stack showing lead work. Also shown at lower level is brickwork corbel where airflow to the roof space is provided via a discreet corbel ventilator – see Ventilation section for details

## HOW TO ORDER

Coneslates – state pitch and pipe size and number required.  
Bespoke: provide drawings/ dimensions.

Atomic weight:	207.2u
Atomic number:	82
Density:	11.34g/cm <sup>3</sup>
Coefficient of linear expansion:	0.0000297 per °C
Thermal conductivity:	34.76W/m°C
Melting point:	327.4 °C

BS EN 12588:2006 Code no	Thickness mm	Weight kg/m <sup>2</sup>	Colour code
3	1.32	14.97	Green
4	1.8	20.41	Blue
5	2.24	25.40	Red
6	2.65	30.05	Black
7	3.15	35.72	White
8	3.55	40.26	Orange

## SPECIFICATION WORDING

Coneslate to roof pipe penetration or bespoke lead requirements by Cavity Trays of Yeovil Somerset BA22 8HU (01935 474769).  
Request liability/conformity document upon completion.

### PRODUCT NAME - GROUP

Lead Fabrications

### CONESLATE DIMENSIONS

400mm x 415mm base  
Pipe diameter 100mm  
Pipe height 115mm  
Select code 3 or code 4 lead weight  
Roof pitch suitability 20° - 40°

### NEW WORK APPLICATIONS

Yes

### RETROFIT APPLICATIONS

Yes

### CONGRUENT WITH OTHER ROOF ELEMENTS

No identified incompatibility

### BESPOKE FABRICATIONS

Yes

### MATERIAL

Lead to BS EN 12588:2006  
Lead weights code 3,4,5,6,7.

### COLOUR

Natural lead grey

### REGULATION COMPLIANCE

Yes

### CAD DOWNLOADS

Yes

### DESIGN CONSIDERATIONS

Lead surface water run-off can mark some finishes – draw attention to material finishes if appropriate



## DESIGNERS' COMMENTS

PD 6697:2010 stipulates lead used for flashings and weatherings must be not less than 1.8mm thick and manufactured to BS EN 12588. This is the standard and minimum thickness used in all our products with options of other lead thicknesses up to code 8 @ 3.55mm.