

## Specifications

|   |  |
|---|--|
| Product name - group                      | Type B   |
| Cavity widths accommodated                | All – width does not affect functionality<br>2440mm standard lengths   |
| Dimensions                                | Standard: 130 x 2440mm<br>Insulated: 130 x 2440mm  |
| Bespoke options                           | Yes  |
| Traditional construction compatible       | Yes  |
| Timber frame construction compatible      | Yes  |
| New work applications                     | N/A  |
| Retrofit applications                     | Yes  |
| Masonry skin styles                       | No known limitation  |
| Undulating masonry faces                  | Compatible   |
| Congruent with other wall elements        | For use in single storey applications  |
| Arrested water evacuation                 | N/A - no horizontal arrestment   |
| Thermal transmission of material          | Negligible - 0.15 – 0.17   |
| Material                                  | Polypropylene 0.15-0.1<br>Mineral rock insulation 0.04 W/(mK)<br>(thermal performance can vary pending extent of compression)  |
| Colour                                    | Black  |
| Extrudes / compresses under load          | No   |
| Pack size                                 | Available individually   |
| CFC                                       | CFC Free   |
| ODP                                       | Zero   |
| Regulation compliance                     | Can be used to satisfy arrestment  |
| May be used if cavity insulation present? | Yes with compliant insulation types  |
| CAD downloads                             | Yes  |
| Design considerations                     | May be used to interrupt the damp path as identified in LABC 12.2.5, fig 9.<br>For horizontal arrestment where a flat roof abuts an existing cavity wall, see type E |

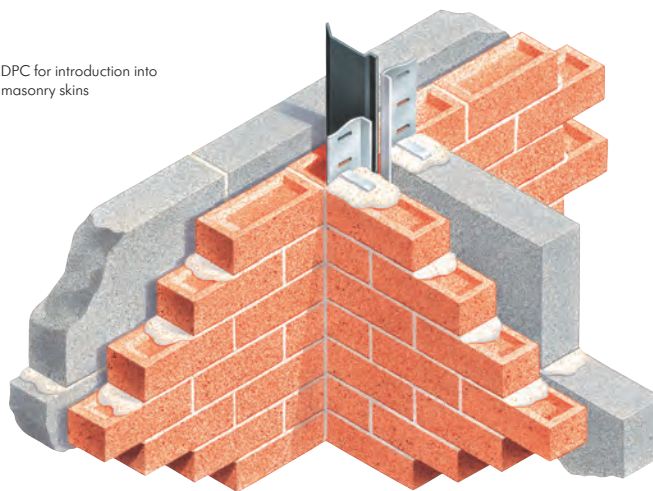
## TYPE B

### Vertical DPC for introduction into existing masonry skins

- Introduces vertical DPC element
- Suitable for traditional or timber frame construction
- Requires minimal masonry slot cutting to install
- Ensures regulation compliance when using profiles
- Shape suitable for mid-cavity and frame edge positioning

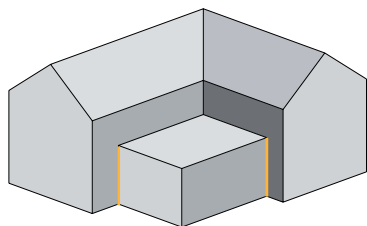


Vertical DPC for introduction into existing masonry skins

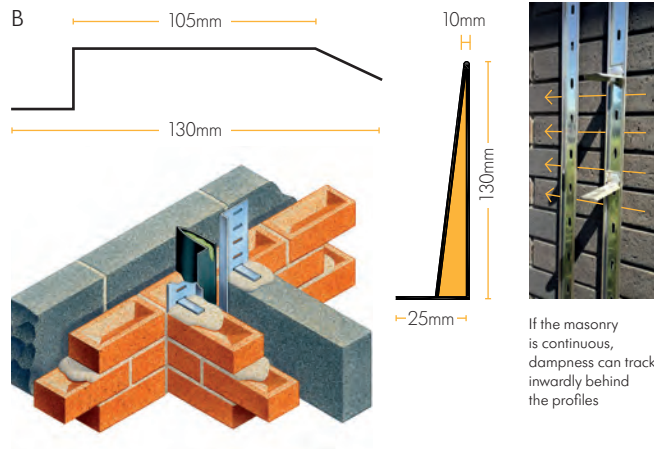


### Use

To introduce a vertical DPC element to an existing exterior skin of a cavity wall where its status changes from exterior to interior by virtue of a porch or similar being attached.



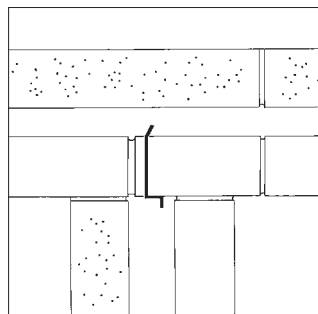
Original exterior wall becomes an interior wall when an extension is constructed. Vertical DPC integrity is required as well as horizontal DPC integrity.



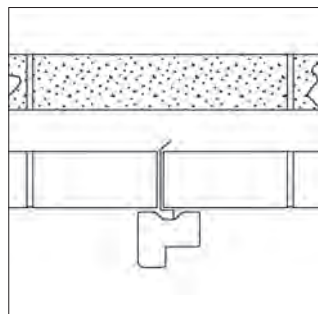
If the masonry is continuous, dampness can track inwardly behind the profiles

### Solution

The Type B is a semi-rigid vertical DPC that may be introduced into an existing skin following mechanical cutting of the masonry to provide a vertical slot 4-6mm wide. The Type B establishes a permanent DPC presence isolating the existing skin externally beyond the vertical point it becomes internal. This product is particularly appropriate where the cavity is not maintained at the point a new porch is attached (no T-junction cavity continuity).



Type B between leaves of cavity wall.



Type B with door-frame

### Insulated Version

A folded rigid DPC version of the Type B with sandwiched compressible insulation is now available. This requires a wider slot of 10mm to be cut in the masonry.

### How to Order

State Type B standard or insulated and number of 2440mm lengths required. Bespoke sizes: provide dimensions of profile required.

### Designers' Comments

Water soaking into masonry does not discriminate and tracks in all directions. The Building Research Establishment states: 'ensure building attachment vertical DPC is provided'. The Type B Cavitytray cannot act as a continuous cavity at a T junction where a building attaches but it can replicate functionality in preventing wet transmission.

### Bill of Quantity / Specification Wording

**F30 - Clause 370 Preformed Cavity Trays**

**Manufacturer: Cavity Trays Ltd, Yeovil Somerset BA22 8HU Tel: 01935 474769**

Type B standard / insulated vertical DPC to be inserted into vertical slot cut to interrupt permeation path in existing cavity wall. Build in carefully observing manufacturers' instructions to ensure correct installation. (2440mm lengths). Metres run \_\_\_\_\_.