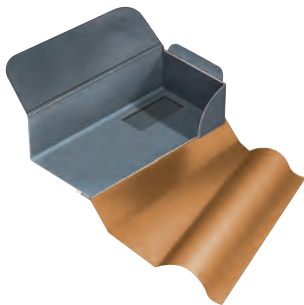


Flashings - Alternative Options

Lead flashing remains the most popular choice to have bonded to our preformed trays. Alternative options are available for projects where compatibility issues or visual characteristics are of concern.

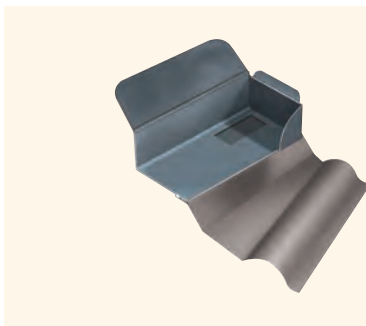


Where an inert flashing medium can help maintain neutral balance in the presence of limestone, magnesium limestone, sandstone and some granites, building design should always consider the flow of water from limestone to other masonry materials and flashing mediums. Where continuity of metal type to match the roof finish ensures most appropriate compatibility and visual continuity (example copper roof with copper flashings).

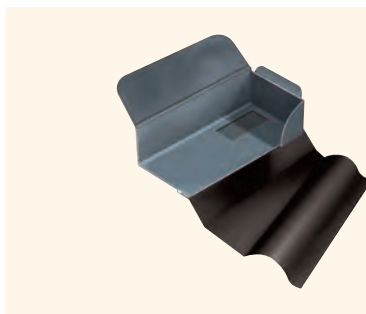
The synthetic flashing addition to our range is a composite material consisting of aluminium mesh enveloped within silian-modified polymer rubber. It is non-permeable and offers similar malleability to lead flashing. It will hold to shape and once dressed can be additionally secured in place with adhesive if required. Resilient to temperatures between -20° and $+70^{\circ}$. UV and ozone resistant.

IMPORTANT

Where trays are supplied with flashings attached, all flashings will be manufactured from code 4 lead to BS EN 12588 unless otherwise stipulated on the order and will be subject to our full product warranty. Our warranty extends to the tray only where copper, synthetic or aluminium flashings are requested.



Material	Lead
Standard	BS EN 12588
Thickness	1.8mm - code 4
Weight SQ Metre	20.41 kgs/m ²
Colours	Natural
Considerations	Malleable and resilient medium shapes easily and provides long service life. Can be clipped or stuck if required
Rolls Available	All widths up to code 8 available separately



Material	Synthetic Perform
Specification	BBA 09/4681
Thickness	2.1mm
Weight SQ Metre	3.6 kgs/m ²
Colours	Light grey, terracotta, black
Considerations	Resilient with negligible spring and good hold. Can be stuck or clipped if required.
Rolls Available	4m x 150mm, 250mm, 300mm, 450mm, 1250mm