

## Specifications

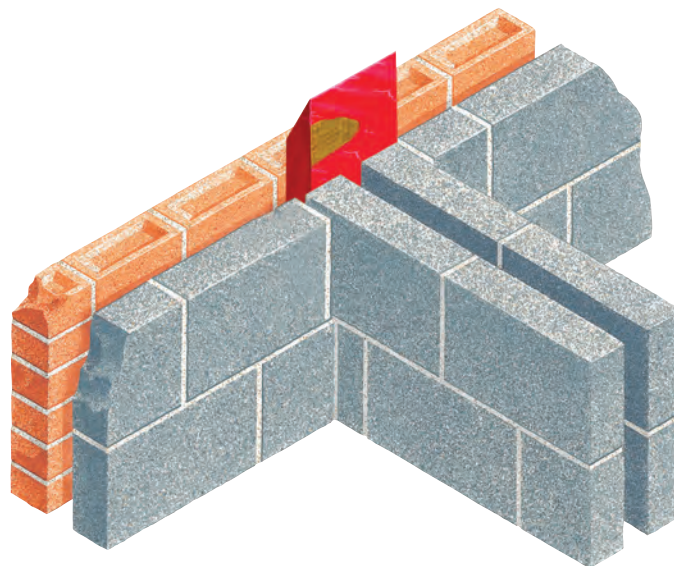
Product name - group	Cavi 60 Type SAF Vertical Barrier
Exposure rating	Very severe
Cavity - sizes accommodated	Up to 140mm
Special cavity widths accommodated	Yes – bespoke service offered
Product lengths	1200mm x 300mm (typical)
Product corners	Internal and external in matching dimensions
Acts as vertical dpc	Yes
Acts as insulator	Yes
Timber frame / traditional construction	Both styles accommodated
Masonry skin styles	All popular flat faced masonry
Undulating masonry face finishes	Seek advice providing details of material
Acoustic insulator	Yes
Fire rated	Yes – Cavi 60 denotes 60 minutes rating when tested as stated, see: Important
Vertical and horizontal applications	Vertical only – see adjacent page for horizontal barrier
Compatible with other cavity wall elements	Yes – see Designers' Comments reference starter section
Securing ties supplied	N/A compression held and wedge holds on lower
Pack sizes	Lengths available individually
Insulation K value	Rock MW 0.035W/mK
Colour	Red
Building Regulations	Yes regulations can be satisfied
NHBC / Robust Details / Building Regulations	Yes requirements can be satisfied
CFC free	Yes + zero ODP
ECO points rating	Low
CAD drawing downloads available	Yes

## CAVI 60 TYPE SAF VERTICAL CAVITY BARRIER

### Fire Resistant Barrier / Closer

- Acoustic Barrier
- Fire Barrier – 1 hours rating
- Sloping shape deflects water forward
- Easy linking and continuity

Angled ends prevent horizontal water entry between joins + optional bonded DPC



### Requirement

To provide vertical 4 hour fire rated acoustic cavity barrier at party wall junctions.

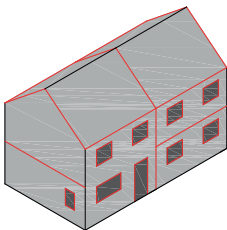
## Solution

This vertical dual-function barrier is for use where separating walls (party walls) join exterior cavity walls. The barrier introduces a four hour rated fire integrity level and acoustic cushioning as demanded by legislation. The ends of the Cavi 60 Type SAF Vertical Barrier are angled so that each vertical length wedges into and against the vertical length under it, promoting continuity. Water cannot permeate inwardly because all joints are made sloping forward towards the outer leaf (as with the horizontal SAF barrier).

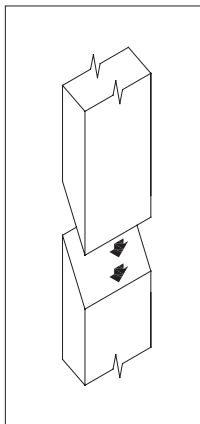
A flap at one end of the encapsulation sleeve is also provided should securing to the inner skin be required.

Vertical barriers are enveloped within a polythene sleeve sufficiently robust to act as a DPC, as defined by NHBC / Building Regulations. In applications where a rigid DPC presence is also required, the barrier is available with a semi-rigid polypropylene DPC bonded to one side. The specifier has the choice of two formats, both of which permit compliance in a manner most appropriate for the specific build detail.

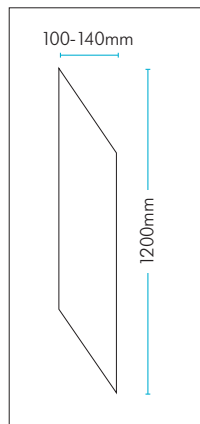
Cavi 60 Type SAF vertical barriers are available in a range of standard and bespoke sizes.



Vertical and horizontal barriers should be installed to create separate compartments in accordance with LABC 7.3.3.3. and NHBC 6.2.9.



The joining between vertical barrier/vertical barrier and vertical barrier/horizontal barrier always slopes forward. Flat / horizontal joins via which penetrating water might permeate are eliminated.



Vertical lengths lap and link use

## Designers' Comments

Adoption of this approach can allow you to use a default value of 0.2. Should the party wall incorporate measures to prevent inter-dwelling water (spillage/flooding) contamination as defined by NHBC/Robust Details, the presence of a vertical barrier can block the intended water exit path. To overcome this problem a starter section of the Cavi 60 Type SAF Vertical Barrier that maintains an exit route can be supplied for placement at the base of the intersection. The section also offers compatibility where an exterior wall cavity gas barrier is present. A Type W caviweep-vent is incorporated to facilitate discharge through the exterior skin. Fire and acoustic integrity to both dwellings can be maintained.

Every building that is divided into more than one area of different occupation must be designed and constructed in such a way that in the event of an outbreak of fire within the building, fire and smoke are inhibited from spreading beyond the area of occupation where the fire originated. 2.2 BR(S) – mandatory.

## Bill of Quantity / Specification Wording

F30 Accessories / sundry items for brick / block / stone walling

180 Cavity Closers

Manufacturer: Cavity Trays Ltd, Yeovil Somerset BA22 8HU Tel: 01935 474769

Cavi 60 Type SAF Fire Rated Vertical Cavity Barrier to close vertically cavities of external walls. Incorporate and build in carefully observing manufacturers' instructions to ensure continuous and correct installation. (1200mm lengths). Metres run \_\_\_\_\_.

## Important

Fire-rated barriers have been fire tested at independent Fire Research Stations, achieving the levels of fire integrity displayed with traditional masonry brick and block construction. These tests comply with BS 476: Part 20: 1987. The Cavi 60 prefix identifies barriers achieving a sixty minute fire integrity rating within our reporting parameters.

Where usage falls outside of this scope such as where one skin is not of masonry, it is the users responsibility to ensure the proposed construction provides a level of stability, integration, performance and fire resistance that is fit for purpose and the resultant detail will perform to the standard created and required by the user.

Attention must always be paid to any possible deflection or distortion which could cause gaps to form between the material and a fire barrier.

In the event of a fire, Cavity Trays Ltd cannot accept liability for failure where usage is outside of the standard application, including but not limited to, where deflection or distortion has allowed gaps to form around the barrier, or where the barrier is not fitted in accordance with the manufacturer's guidelines.